

## KD30 Series

### Description

The KD30 Series are direct-coupled non-spring return electric damper actuators, they are compact in size and are easily installed.

### Application

The KD30 Series are typically used in two-position zone applications or small dampers in HVAC systems that require relatively high rotation speed and low torque. They are designed for use with on/off or floating thermostats, controllers, or building automation systems.

### Features

- Compact in size
- Quick damper opening and closing
- LED indicates Green/Red for open/close position and troubleshooting
- Adjustable end stop for both open and close
- Direct-coupled to round/square shaft
- Manual gear release button simplifies actuator setup and adjustments in the field
- Screw terminal block makes wiring quick

### Specification

**Power supply:** 24 VAC/DC, 50/60 Hz, 2VA Class 2

**Control Signal:** On/off or floating

**Angular Rotation:** 0 to 95°, adjustable

**Torque and Motor Timing:**

13 in-lb (1.5 N.m), 30 - 40 seconds for 95°

**Mounting:**

Round shaft 1/4 to 5/8 inch (6 to 16 mm)

Square shaft 1/4 to 7/16 inch (6 to 11 mm)

**Shaft length:** 1.5 inches Min.

**Connections:** Wire 14 to 22 AWG

**Dimensions:** 5 x 2.6 x 2 inches (127 x 66 x 51 mm)

**Weight:** 0.75 lb. (0.34 kg)

**Enclosure:** Flame-retardant plastic

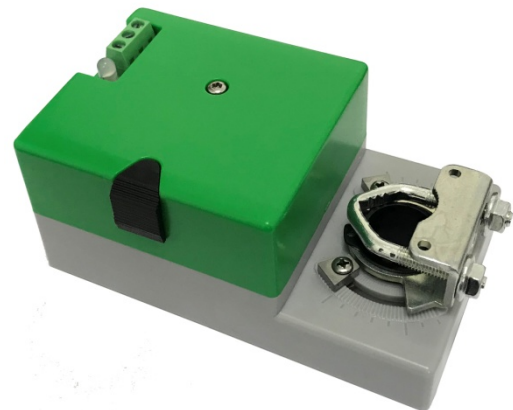
**Noise Level:** < 35 dBA max. at 1 meter

**Environmental Limits:**

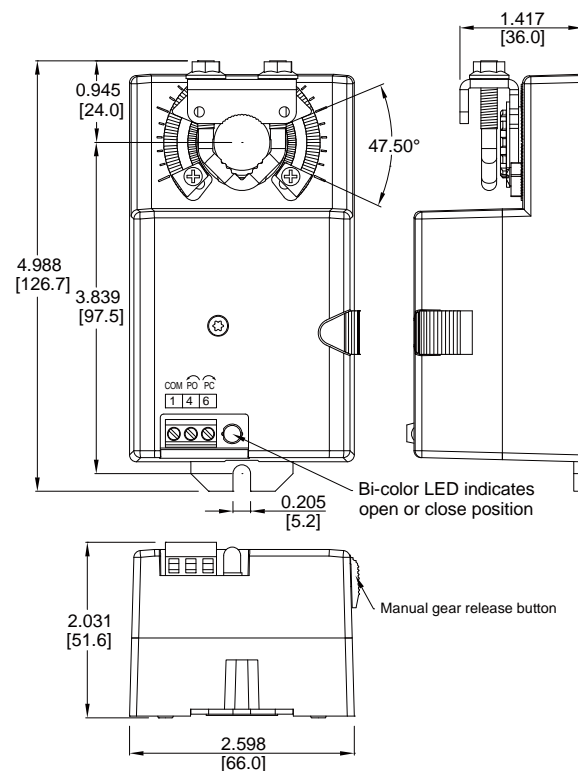
Operating -4 to 140°F (-20 to 60°C)

Shipping -22 to 176°F (-30 to 80°C)

Humidity 5 to 95% RH (non-condensing)



### Dimensions inch [mm]



### Order Notes: KD30-XX (floating control)

Model	T1	T4	T6
KD30-LO*	COM	CCW-OPEN	CW-CLOSE
KD30-LC	COM	CCW-CLOSE	CW-OPEN
KD30-RO	COM	CW-OPEN	CCW-CLOSE
KD30-RC	COM	CW-CLOSE	CCW-OPEN

Notes:\* KD30-LO is the default model with terminal block setting as above drawing